

BEGINNING RECORDER



**Palos Verdes Peninsula
Unified School District**

NAME _____

KEYS TO SUCCESS

Take care of your equipment and bring it to class every week.....

1. **Your music folder with your music book inside**
2. **A pencil**
3. **Your recorder**

Come to class prepared and ready to work.....

1. **Bring only your folder, music, pencil and recorder.**
2. **Go to your seat quickly and wait quietly for class to begin.**

Be courteous to the teacher, your classmates, and others at school...

1. **Don't toot your recorder as you walk around campus.**
2. **Wait quietly and listen when someone is playing a solo.**
3. **Don't play your recorder when the teacher is talking.**
4. **Respect each student's effort to play the recorder.**

Practice at home.....

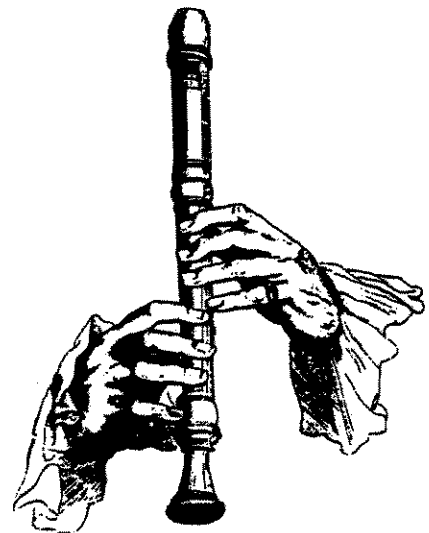
1. **Practice 10 minutes each day. This is your music homework. "Practice makes perfect" definitely applies to recorders.**
2. **Look at your music while you play, even if you have memorized the song. Practice trouble spots over and over until you can do them easily.**

Receive satisfaction for all your hard work.....

1. **Learn to read the notes so you can read the music.**
2. **Be a tutor for someone who needs extra help.**
3. **Get good grades in music. Your grade is based mostly on your participation, your behavior and your attitude.**

FIRST LESSON

1. *Blow GENTLY, like a long steady whistle.*
2. *Use your tongue to begin the sound...
....say "too" or "doo" into the recorder.*
3. *Cover holes with the pads of your fingers, not the tips.*
4. *ALWAYS use your left hand at the top, right hand at the bottom of the recorder.*

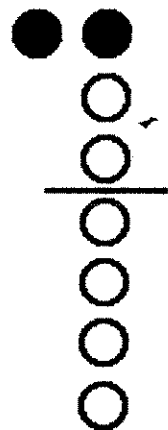


CONTENTS

Played	Song	Page
<input type="checkbox"/>	"B" Ready	3
<input type="checkbox"/>	"B" Funky	4
<input type="checkbox"/>	Waltz for "A"	5
<input type="checkbox"/>	Sheep May Safely Graze Tango	6
<input type="checkbox"/>	Will You?	7
<input type="checkbox"/>	"G" I'm Good!	8
<input type="checkbox"/>	What's in Your BAG?	9
<input type="checkbox"/>	Oh, How I Love to Play!	10
<input type="checkbox"/>	Go to Sleep!!!	11
<input type="checkbox"/>	Ring, Ring the Big Bell!	12
<input type="checkbox"/>	Hot Cross Buns	13
<input type="checkbox"/>	French Cradle Song	13
<input type="checkbox"/>	The Cuckoo	14
<input type="checkbox"/>	Au Claire De La Lune	14
<input type="checkbox"/>	Merrily We Roll Along	14
<input type="checkbox"/>	Little Train	15
<input type="checkbox"/>	Engine, Engine Number Nine	15
<input type="checkbox"/>	Old MacDonald	16
<input type="checkbox"/>	Jolly Old St. Nicholas	16
<input type="checkbox"/>	Westminster Chimes	17
<input type="checkbox"/>	Shake Them Simmons Down	17
<input type="checkbox"/>	The Noble Duke of York	18
<input type="checkbox"/>	Hush Little Baby	18
<input type="checkbox"/>	Scotland's Burning	19
<input type="checkbox"/>	Jingle Bells	20
<input type="checkbox"/>	Amazing Grace	20
	Fingering Chart	21

"B" READY

DRAW A WHOLE NOTE ON LINE "B":



STUDENTS: PUT THE STEMS ON THE NOTES TO MAKE THE RHYTHM RIGHT.

"B" FUNKY



WRITE YOUR NAME
AS A RHYTHM
PATTERN.

WRITE A FRIEND'S
NAME AS A RHYTHM
PATTERN.

PLAY THE RHYTHM
NAMES ON "B"...

ADD THE CD....



Chris-to-pher Thomas



Lo - is Mc - Don - ald

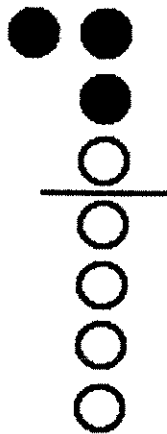


YOUR FIRST NAME :

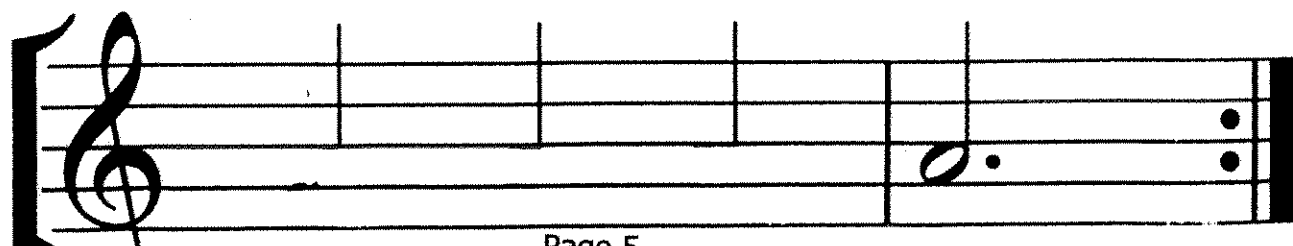
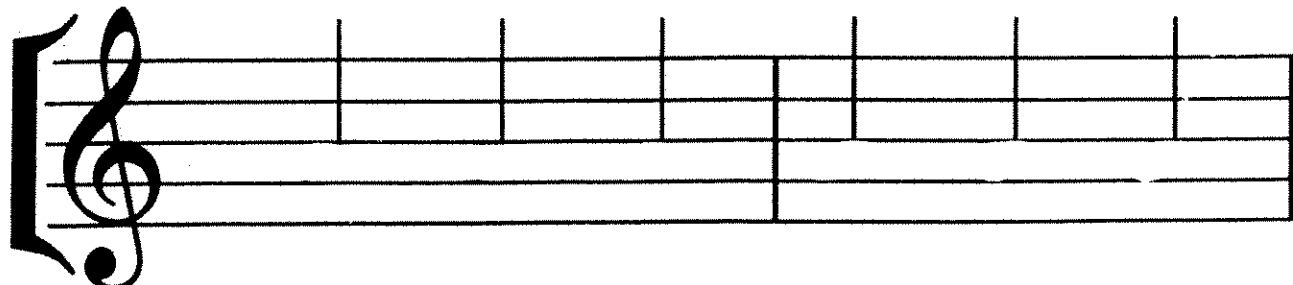
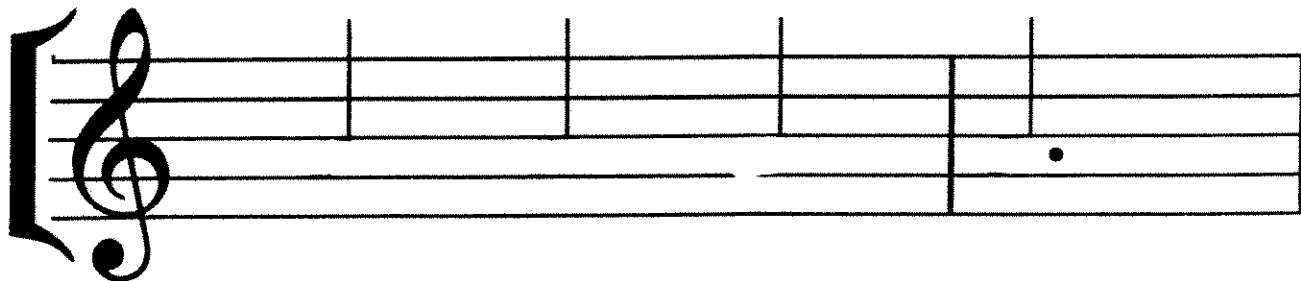
WALTZ for "A"



Draw a half note in space "A".



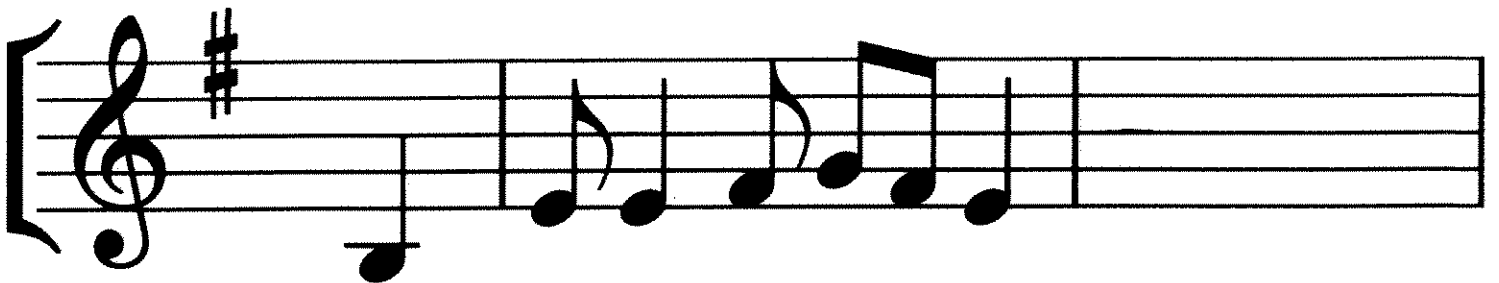
Draw the heads of the missing "A's" and play:



SHEEP MAY SAFELY GRAZE TANGO



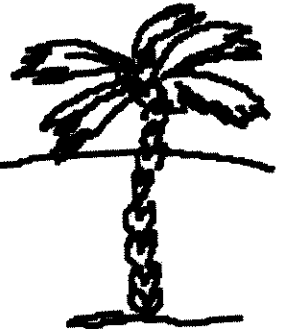
WRITE THE NOTES FOR "B-A-A" IN THE
BLANK MEASURES:



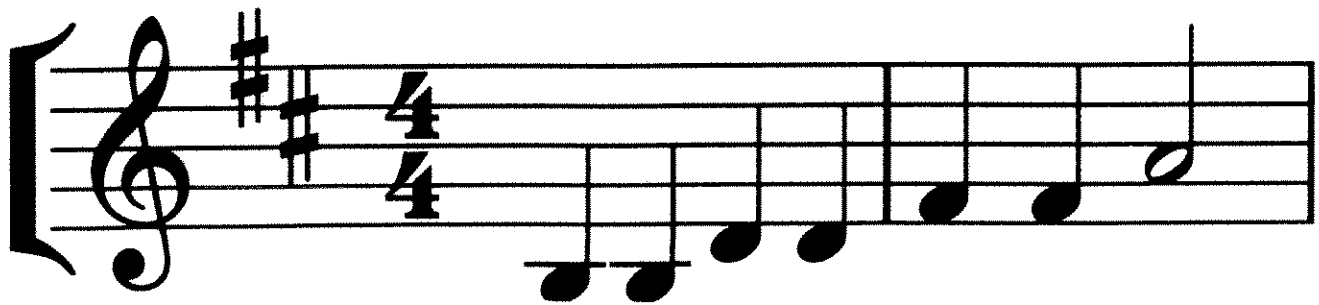
THIS BACTRIAN CAMEL IS INVITING
YOU TO COMPLETE THE SONG AND
GO FOR A BUMPY RIDE....



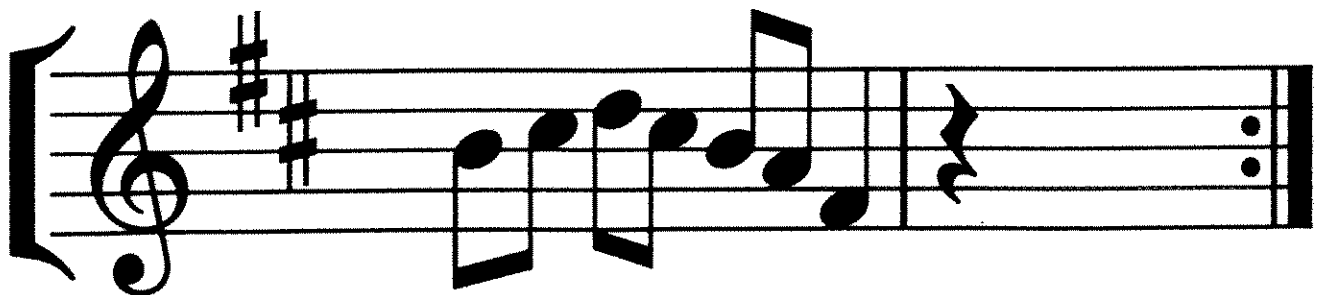
WILL YOU?



HOW DO YOU THINK YOU WOULD
MOVE, RIDING ATOP THIS CAMEL?



Small hump, huge hump, two humps too...



Makes a bumpy, lumpy ride,

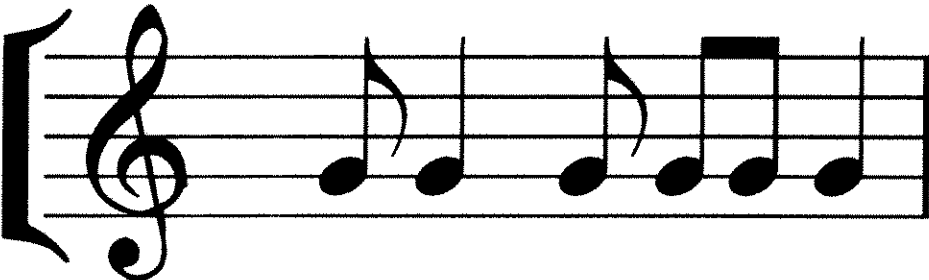
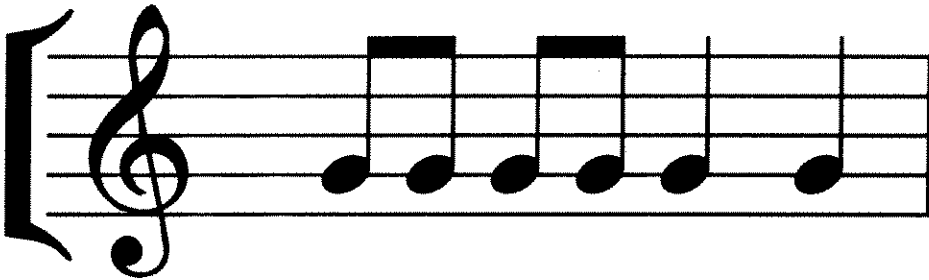
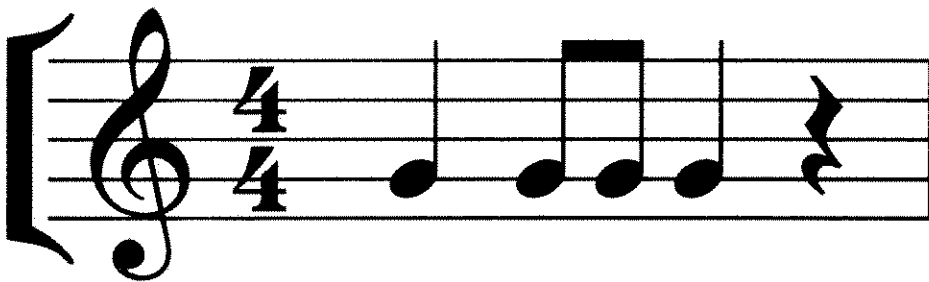
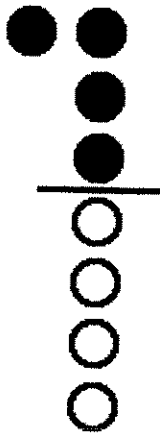
WILL YOU?

"G", I'M GOOD!

ECHO GAME



DRAW AN EIGHTH
NOTE ON LINE "G"

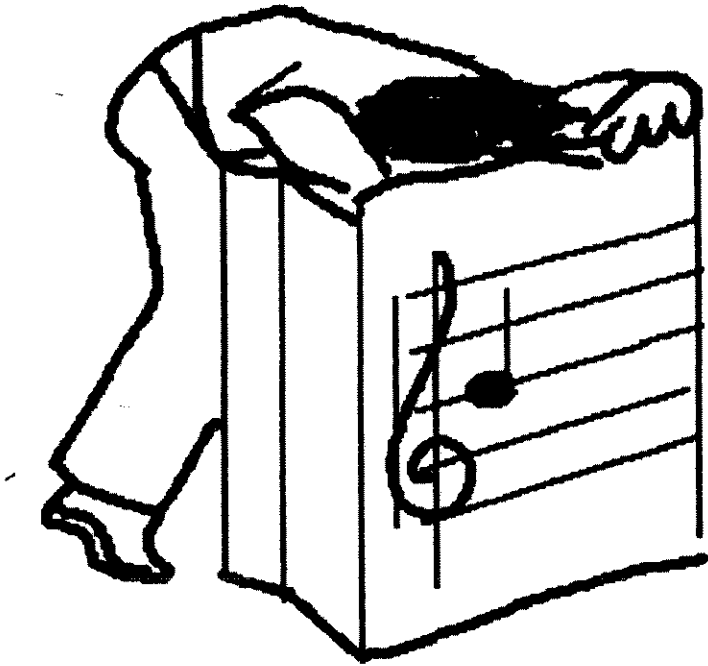


CHECK YOUR EAR...

READ IT TO SEE

WHAT YOU HEARD

WHAT'S IN YOUR BAG?



FINISH WRITING "B-A-G" ON THE BAG.

LISTEN TO THE CD/TAPE AND ECHO THE PATTERNS YOU HEAR USING NOTES "B-A-G".

PLAY IT A SECOND TIME, BUT READ THE MUSIC TO SEE HOW GOOD YOUR EAR WAS!

PATTERNS STARTING ON "B"

Four musical staves in 4/4 time, each starting with a treble clef and a key signature of one flat. The first staff has a 4/4 time signature. The patterns are:

- Staff 1: Quarter note B4, quarter note A4, quarter note G4, quarter rest.
- Staff 2: Eighth notes B4, A4, G4, F4, E4, quarter rest.
- Staff 3: Eighth notes B4, A4, G4, F4, quarter note E4, quarter rest.
- Staff 4: Quarter note B4, quarter note A4, quarter note G4, quarter rest.

PATTERNS STARTING ON G"

Four musical staves in 4/4 time, each starting with a treble clef and a key signature of one flat. The patterns are:

- Staff 1: Quarter note G4, quarter note A4, quarter note B4, quarter rest.
- Staff 2: Eighth notes G4, A4, B4, C5, B4, A4, quarter rest.
- Staff 3: Eighth notes G4, A4, B4, C5, quarter note B4, quarter rest.
- Staff 4: Quarter note G4, quarter note A4, quarter note B4, quarter rest.

OH, HOW I LOVE TO PLAY!



TALK AND CLAP
THIS BEAT:

4/4

Oh how I love to play.

I prac - tice ev - 'ry day.

Oh how I love to, oh how I love to,

Oh how I love to play!

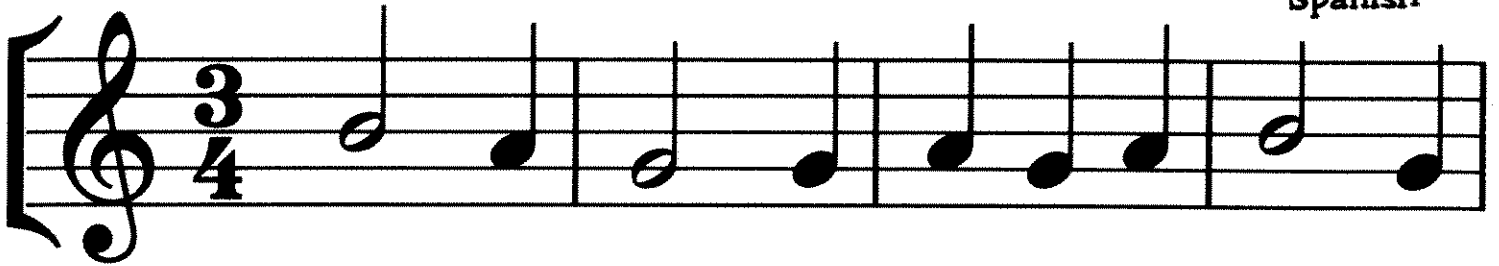
CAN YOU
USE SOME OF
THESE RHYTHMS
IN YOUR
IMPROVISATION?

GO TO SLEEP!!!

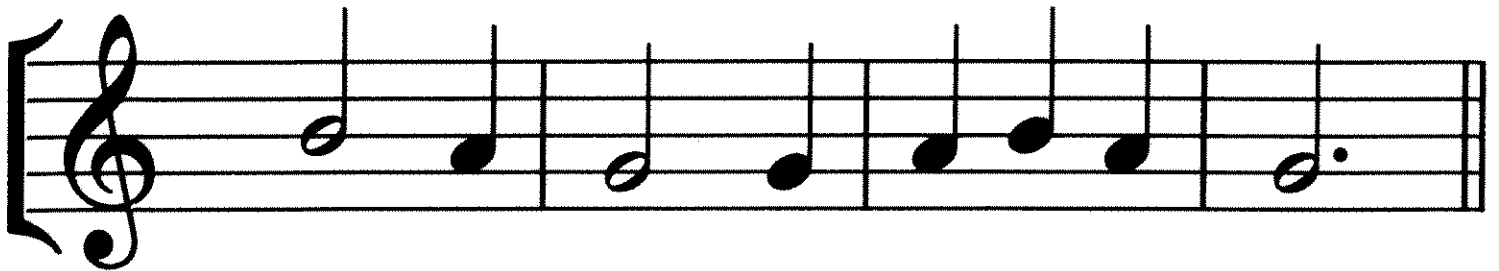


A SONG TO SING, "SING-AND-FINGER", AND PLAY...

Spanish



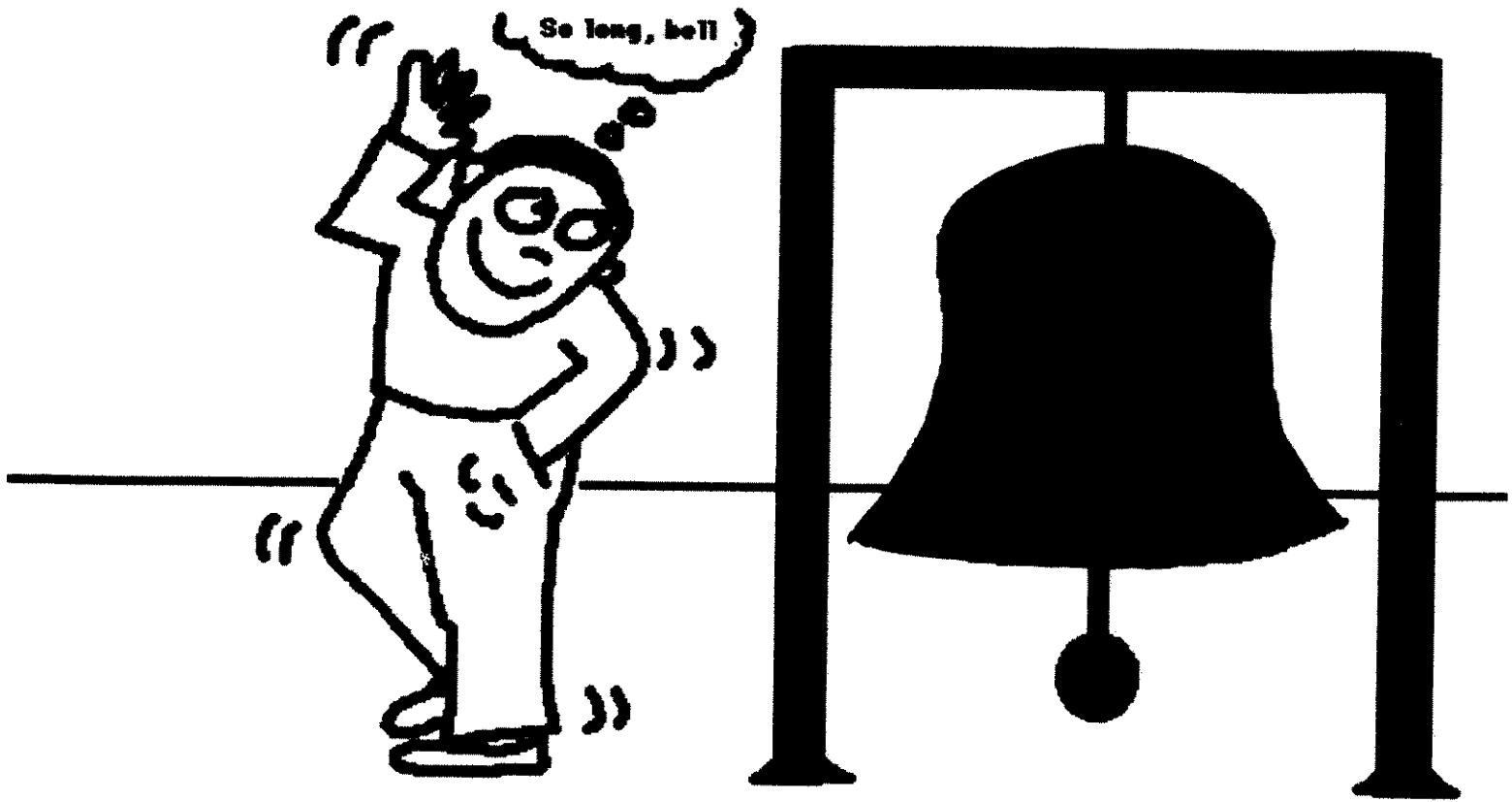
Go to sleep, my dear lit-tle bro - ther,



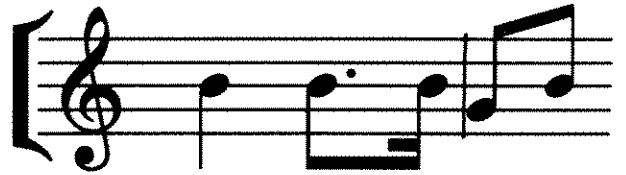
Go to sleep, my lit - tle * "ni - no".

*pronounced "neen-yo"

RING, RING THE BIG BELL!



PRACTICE THIS TRICKY PATTERN FIRST:



HOW MANY TIMES DOES IT HAPPEN IN THE SONG?

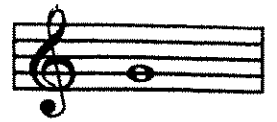
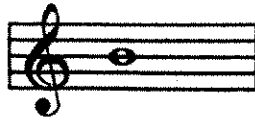


Ring, ring the big bell, Ain't 'gonna ring no more,



Fill my pockets be - fore I go, Ain't 'gonna ring no more.

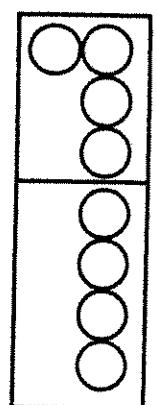
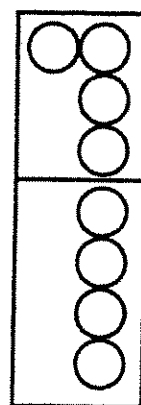
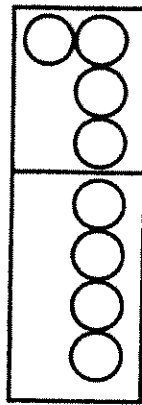
NEW
NOTES 



B

A

G



*Color in the correct
fingering*

HOT CROSS BUNS

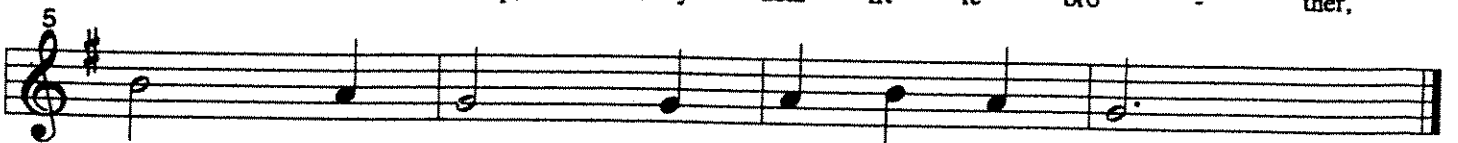


Hot Cross Buns, Hot Cross Buns; One a pen-ny, Two a pen-ny, Hot Cross Buns.

FRENCH CRADLE SONG



Go to sleep, my dear lit - - le bro - - ther,



Go to sleep; I'll rock you and sing.

THE CUCKOO

Musical score for 'THE CUCKOO'. It consists of two staves of music in G major (one sharp) and common time. The first staff begins with a dynamic marking of *f* (forte) and contains the lyrics: 'Cuck - oo, Cuck - oo, sweet - ly sings the Cuck - oo,'. The second staff begins with a dynamic marking of *p* (piano) and contains the lyrics: 'Cuck - oo, Cuck - oo, comes the soft re - ply.'

f
Cuck - oo, Cuck - oo, sweet - ly sings the Cuck - oo,
p
Cuck - oo, Cuck - oo, comes the soft re - ply.

AU CLAIRE DE LA LUNE

Musical score for 'AU CLAIRE DE LA LUNE'. It consists of two staves of music in G major (one sharp) and common time. The first staff contains the lyrics: 'In the gen - tle moon - light my dear friend Pier - rot'. The second staff contains the lyrics: 'Asks me for my pen to write a lit - tle note.'

In the gen - tle moon - light my dear friend Pier - rot
Asks me for my pen to write a lit - tle note.

MERRILY WE ROLL ALONG

Musical score for 'MERRILY WE ROLL ALONG'. It consists of two staves of music in G major (one sharp) and common time. The first staff contains the lyrics: 'Mer - ri - ly we roll a - long, roll a - long, roll a - long,'. The second staff contains the lyrics: 'Mer - ri - ly we roll a - long, o'er the deep blue sea.'

Mer - ri - ly we roll a - long, roll a - long, roll a - long,
Mer - ri - ly we roll a - long, o'er the deep blue sea.

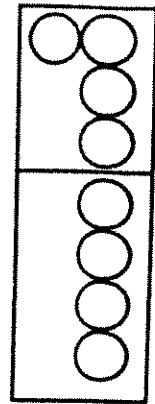
A NEW NOTE

*Color in the correct
fingering*

Circle the E's in each song



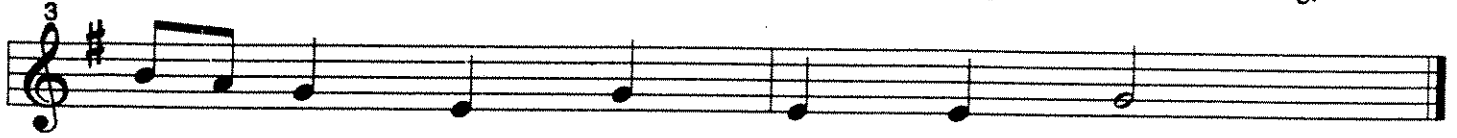
E



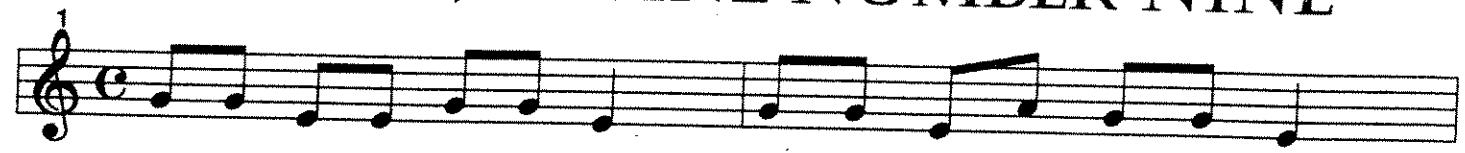
LITTLE TRAIN


1

Lit - tle train mov - ing, mov - ing, mov - ing,

3

Lit - tle train mov - ing down the track.

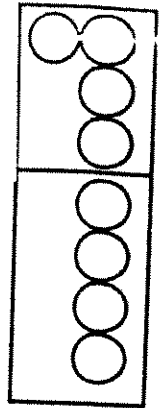
ENGINE, ENGINE NUMBER NINE

1

En - gine, En - gine Num - ber Nine go - ing down Chi - ca - go line,

3

If the train should jump the track, will I get my mon - ey back?

A NEW NOTE


Color in the correct fingering
Circle the D's in each song



D

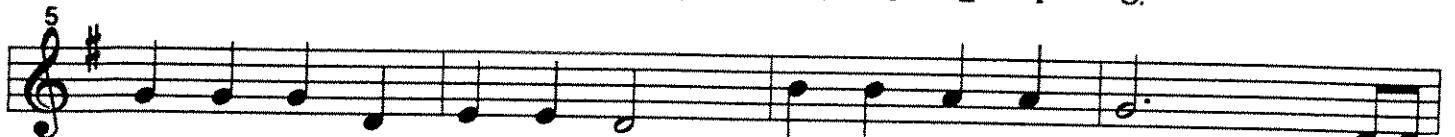
OLD MACDONALD

1 *Fine*




Old Mac - Don - ald had a farm, E - I - E - I - O.

5



On his farm he had a chick, E - I - E - I - O.

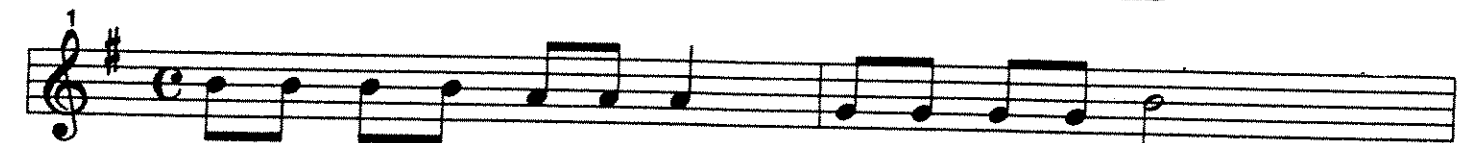
9 *With a D.C. al Fine*



chick chick here and a chick chick there, Here a chick, there a chick, ev - 'rywhere a chick chick.

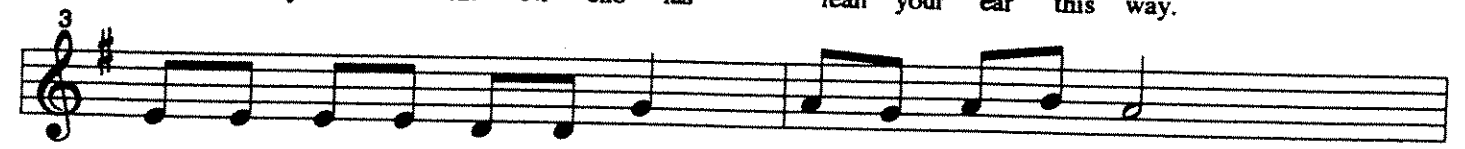
JOLLY OLD ST. NICHOLAS

1



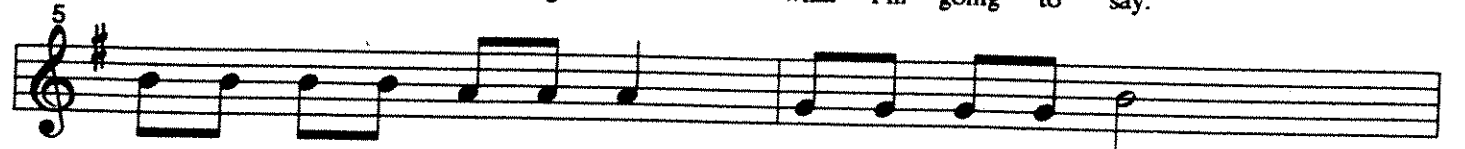
Jol - ly old Saint Ni - cho - las lean your ear this way.

3




Don't you tell a sin - gle soul what I'm going to say.

5



Christ - mas Eve is com - ing soon. Now you dear old man,

7



Whis - per what you'll bring to me, tell me if you can.

WESTMINISTER CHIMES

Two staves of musical notation for 'Westminister Chimes'. The first staff is marked with a '1' and the second with a '3'. Both are in G major (one sharp) and 5/4 time. The melody consists of quarter notes: G4, A4, B4, C5, B4, A4, G4.

SHAKE THEM SIMMONS DOWN

Two staves of musical notation for 'Shake Them Simmons Down'. The first staff is marked with a '1' and the second with a '3'. Both are in G major (one sharp) and common time (C). The melody consists of quarter notes: G4, A4, B4, C5, B4, A4, G4. Lyrics are provided below the notes.

Cir - cle left, do - oh, do - oh, Cir - cle left, do - oh, do - oh,

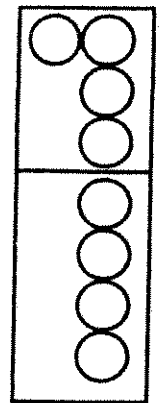
Cir - cle left, do - oh, do - oh, Shake them 'sim - mons down.

A NEW NOTE

Color in the correct fingering
Circle the high C's in each song



C'



THE NOBLE DUKE OF YORK

The nob - le Duke of York, he
had ten thous - and men. He marched them up to the
top of the hill and he marched them down a - gain.

The musical score for 'The Noble Duke of York' is written on three staves. The first staff begins with a treble clef, a key signature of one sharp (F#), and a 2/4 time signature. The melody consists of quarter and eighth notes. The lyrics are placed below the notes. The second staff continues the melody and lyrics. The third staff concludes the piece with a double bar line.

Second verse:

**Now, when we're up, we're up; and when we're down, we're down;
And when we're only half-way up, we're neither up nor down.**

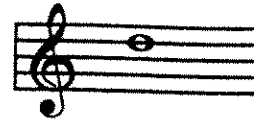
HUSH LITTLE BABY

Hush lit - tle ba - by, don't say a word,
Pa - pa's gon - na buy you a mock - ing - bird.

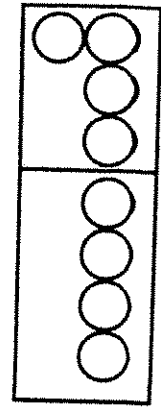
The musical score for 'Hush Little Baby' is written on two staves. The first staff begins with a treble clef, a key signature of one sharp (F#), and a 2/4 time signature. The melody consists of quarter and eighth notes. The lyrics are placed below the notes. The second staff continues the melody and lyrics. The piece ends with a double bar line.

A NEW NOTE

Color in the correct fingering
Circle the high D's in each song



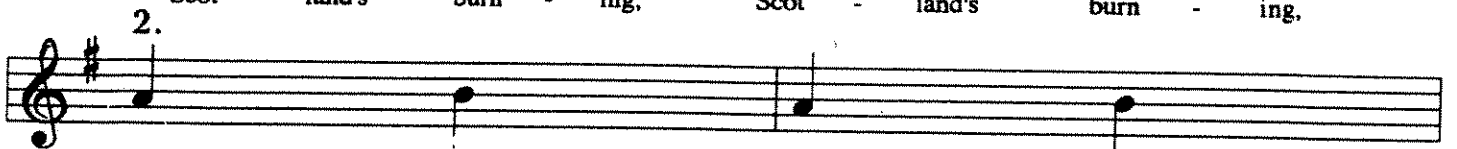
D'



SCOTLAND'S BURNING



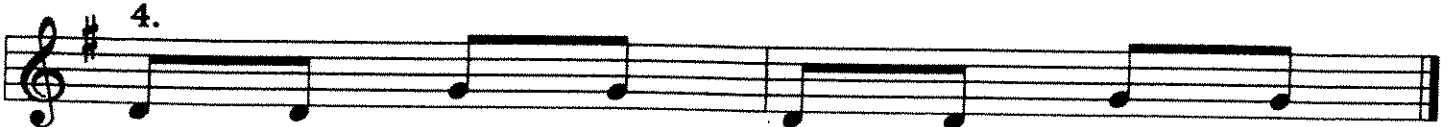
Scot - land's burn - ing, Scot - land's burn - ing,



Look out! Look out!



Fire! Fire! Fire! Fire!



Pour on wat - er, pour on wat - er.



JINGLE BELLS

1
Jin - gle Bells, Jin - gle Bells, jin - gle all the way.

5
Oh, what fun it is to ride in a one horse o - pen sleigh. —

9
Jin - gle Bells, Jin - gle Bells, jin - gle all the way.

13
Oh what fun it is to ride in a one horse o - pen sleigh.

Detailed description: This block contains the musical score for the song 'Jingle Bells'. It consists of four staves of music in G major (one sharp) and 2/4 time. The first staff starts at measure 1 and ends at measure 4. The second staff starts at measure 5 and ends at measure 8. The third staff starts at measure 9 and ends at measure 12. The fourth staff starts at measure 13 and ends at measure 16. The lyrics are written below the notes, with hyphens indicating syllables that span across multiple notes.

AMAZING GRACE

1
A - maz - ing grace, how sweet the sound that

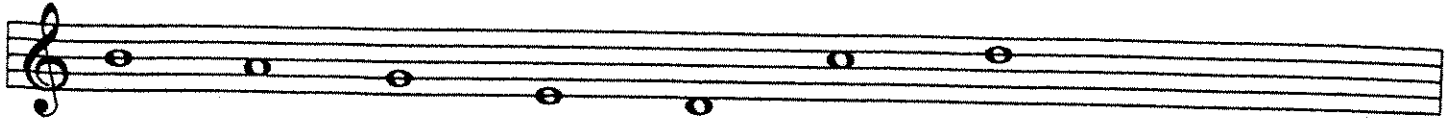
6
saved a wretch like me. — I

10
once was lost, but now am found, was

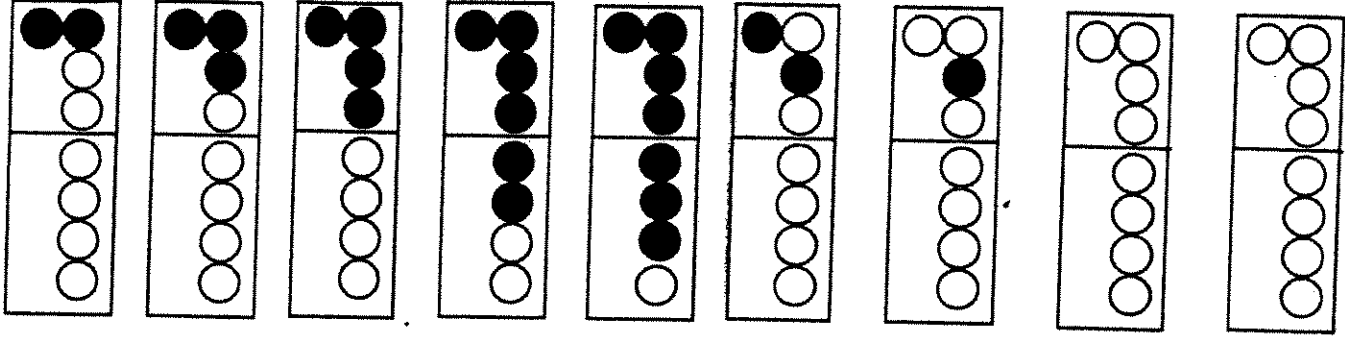
14
blind, but now I see —

Detailed description: This block contains the musical score for the hymn 'Amazing Grace'. It consists of four staves of music in G major (one sharp) and 3/4 time. The first staff starts at measure 1 and ends at measure 5. The second staff starts at measure 6 and ends at measure 9. The third staff starts at measure 10 and ends at measure 13. The fourth staff starts at measure 14 and ends at measure 17. The lyrics are written below the notes, with hyphens indicating syllables that span across multiple notes.

FINGERING CHART



B A G E D C' D'



F# C F E' C#

